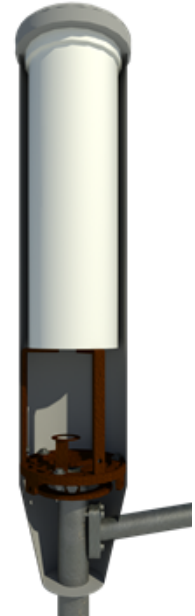


## JPAK-AM-600-04LS Light Pole Antenna Mount w/Radome

### JPAK-AM-600-04LS LIGHT POLE ANTENNA MOUNT

For small cell 7" to 15" diameter canister antennas

The JPAK-AM-600-04LS Antenna Mount attaches to an existing light pole from 3" to 8" in diameter eliminating the need for a new pole, foundation or other infrastructure. The JPAK-AM-600-04LS antenna mount supports all OEM antennas ranging in sizes from 7" to 15" diameter and includes a fiberglass Radome, metal shroud and detachable cage for diplexers and remote meters.

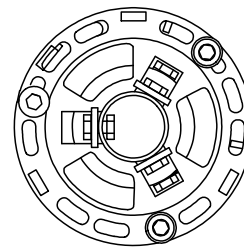
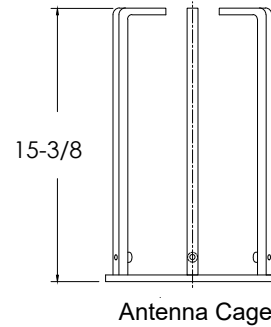
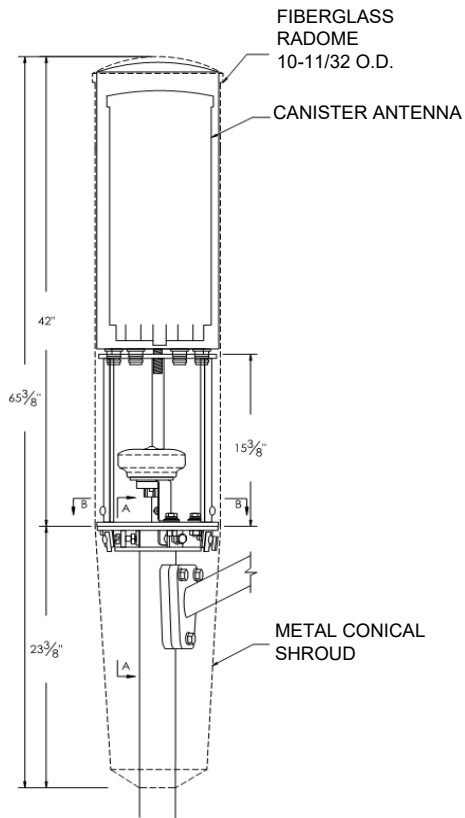


Specifications	
<b>Model Number</b>	JPAK-AM-600-04LS
<b>Mounting Type</b>	Light pole
<b>Color</b>	Mesa Brown (Other color options available)
<b>Material</b>	Steel
<b>Environmental Conditions</b>	Outdoor
<b>Load Rating / Installed Antenna weight (Max)</b>	150 lbs.
<b>Mounting Bracket Assembly Weight</b>	36 lbs.
<b>Dimensions</b>	H 65.3" X DIA. 9.78"
<b>S.S Mounting Hardware for cage, base mount, metal shroud and Fiberglass Radome</b>	Supplied with Bracket
<b>Antenna Model Applicability</b>	All OEM Models
<b>Cage Antenna configuration Types</b>	All OEM Models

JPAK-AM-600-04LS : Revision R2 : Release Date May 18, 2019



## Outline Dimensions



Base Mount Shown on 4" O.D. pole

FIBERGLASS SHROUD (HIDDEN FOR CLARITY)

### JPAK-AM-600-04LS MOUNT DIMENSIONS

#### JPAK-AM-600-04LS Mounting Kit Contents

ITEM #	PART#	DESCRIPTION	QTY
1	SS-12-3	S.S. THREADED ROD 1/2" X 3"	1
2	SS-CS-38-114	S.S. FHCS 3/8 X 1-1/4"	3
3	TFN-W	TEFLON WASHER	3
4	SS-TB-12-112	S.S. TAP BOLT 1/2" X 1-1/2"	3
5	SS-TB-12-2	S.S. TAP BOLT 1/2" X 2"	2
6	SS-LW-12	S.S. LOCK WASHER 1/2"	7
7	SS-FW-12	S.S. FLAT WASHER 1/2"	3
8	SN-38	SPRING NUT 3/8"	3

Please contact MWS engineering ([eng@mwscorp.net](mailto:eng@mwscorp.net): 877-697-2677) for questions regarding this product or other models you may be interested in.

Made in the U.S.A.