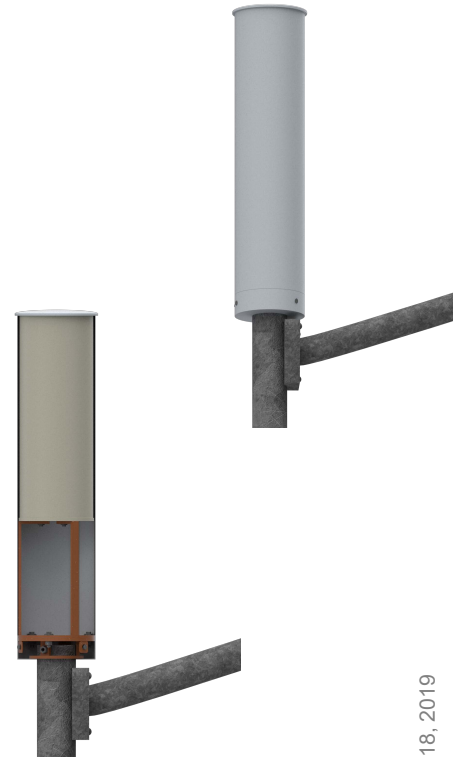


JPAK-AM-600-04LS-2.5 Light Pole Antenna Mount w/Radome

JPAK-AM-600-04LS-2.5 LIGHT POLE ANTENNA MOUNT

For small cell 7" to 10" diameter canister antennas

The JPAK-AM-600-04LS-2.5 Antenna Mount attaches to an existing light pole from 3" to 5" in diameter eliminating the need for a new pole, foundation or other infrastructure. This antenna mount supports all OEM antennas ranging in sizes from 7" to 10" diameter and includes a fiberglass Radome, 2.5" metal shroud and detachable cage for diplexers and remote meters.

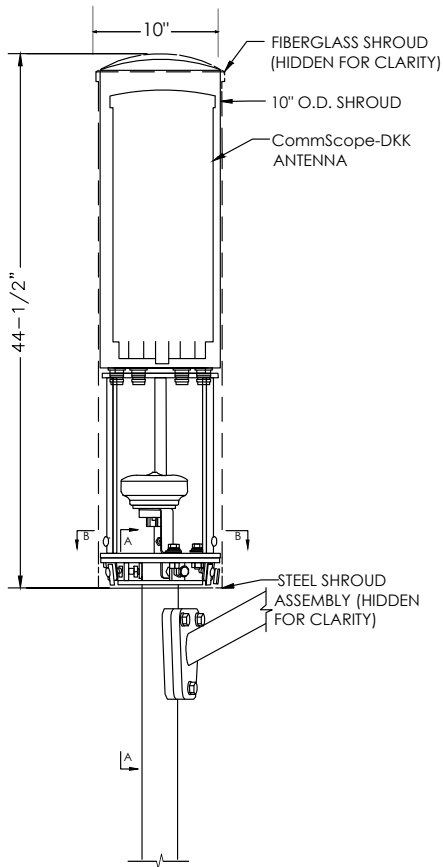


Specifications	
Model Number	JPAK-AM-600-04LS-2.5
Mounting Type	Light pole
Color	Mesa Brown (Other color options available)
Material	Steel
Environmental Conditions	Outdoor
Load Rating / Installed Antenna weight (Max)	150 lbs.
Mounting Bracket Assembly Weight	27.5 lbs.
Dimensions	H 44.5" X DIA. 9.78"
S.S Mounting Hardware for cage, base mount, metal shroud and Fiberglass Radome	Supplied with Bracket
Antenna Model Applicability	All OEM Models
Cage Antenna configuration Types	All OEM Models

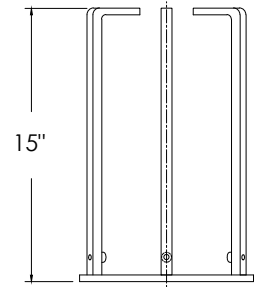
JPAK-AM-600-04LS-2.5 : Revision R2 : Release Date May 18, 2019



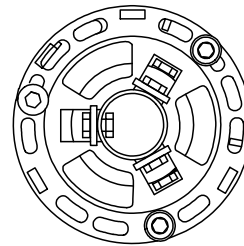
Outline Dimensions



ELEVATION VIEW



ANTENNA CAGE



Section B-B

Base Mount Shown on 4" O.D. pole

JPAK-AM-600-04LS-2.5 MOUNT DIMENSIONS

JPAK-AM-600-04LS-2.5 Mounting Kit Contents

ITEM #	PART#	DESCRIPTION	QTY
1	SS-12-3	S.S. THREADED ROD 1/2" X 3"	1
2	SS-CS-38-114	S.S. FHCS 3/8 X 1-1/4"	6
3	TFN-W	TEFLON WASHER	3
4	SS-TB-12-112	S.S. TAP BOLT 1/2" X 1-1/2"	3
5	SS-TB-12-2	S.S. TAP BOLT 1/2" X 2"	2
6	SS-LW-12	S.S. LOCK WASHER 1/2"	7
7	SS-FW-12	S.S. FLAT WASHER 1/2"	3
8	SN-38	SPRING NUT 3/8"	3
9	SS-CS-14-34	S.S. FHCS 1/4 X 3/4"	2

Please contact MWS engineering (eng@mwscorp.net: 877-697-2677) for questions regarding this product or other models you may be interested in.

Made in the U.S.A.