

JPAK-AM-600-05LS-8-12C Light Pole Antenna Mount

JPAK-AM-600-05LS-8-12C ANTENNA MOUNT

For small cell 10" to 15" diameter canister antennas

The JPAK-AM-600-05LS-8-12C comes pre-assembled ready to install on light poles 3" to 8" in diameter. This mount comes with a cage, base mount and stainless steel hardware to complete the installation. For added esthetic's, we provide a shroud with a closed bottom concealing the entire mount. Other shroud options are available.

The AM-600 series antenna mounts support all antenna makes and models.

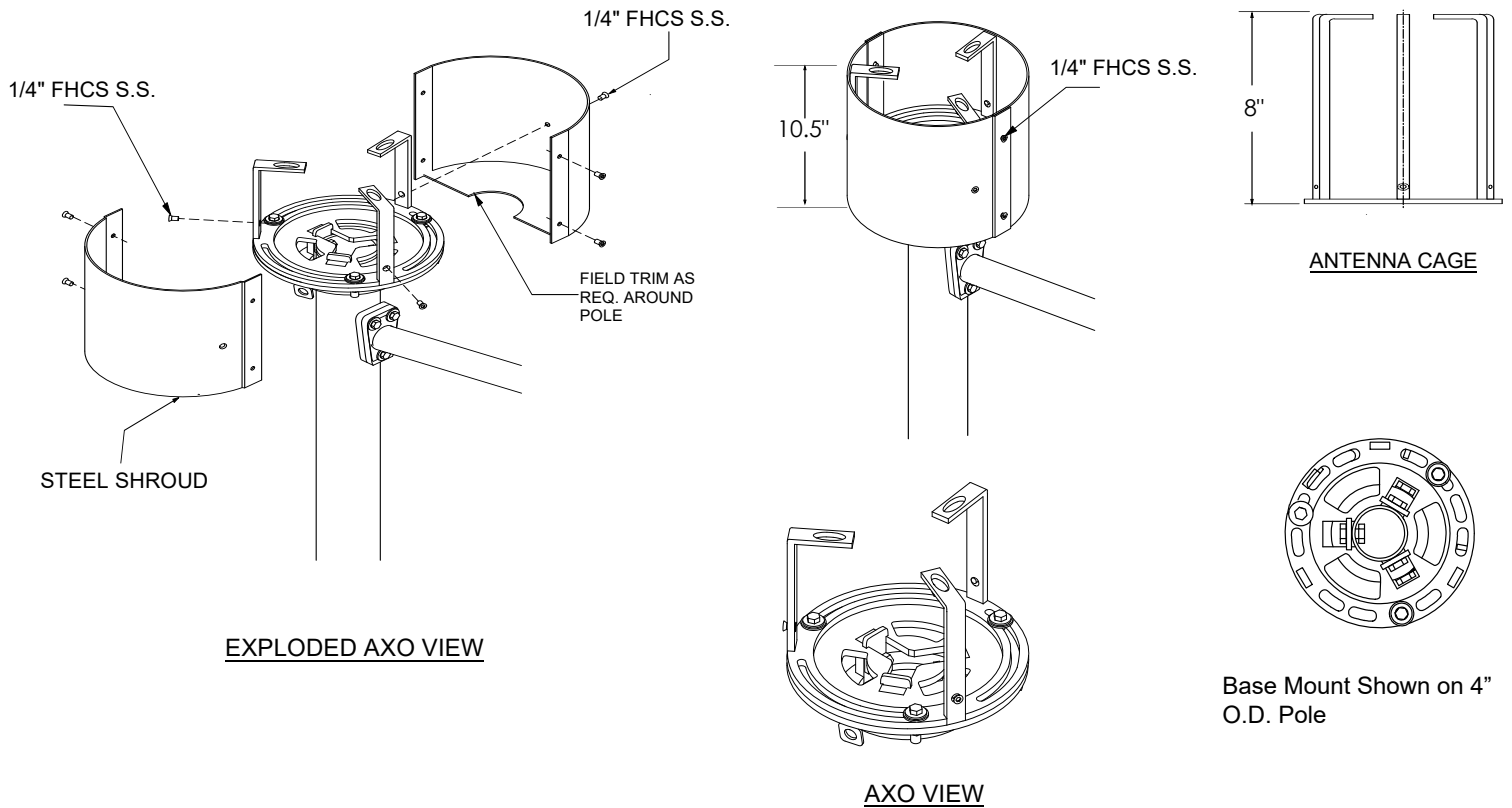


Specifications

Model Number	JPAK-AM-600-05LS-8-12C
Mounting Type	Light pole
Color	Mesa Brown (Other color options available)
Material	Steel
Environmental Conditions	Outdoor
Load Rating / Installed Antenna weight (Max)	170 lbs.
Mounting Bracket Assembly Weight	38.5 lbs.
Dimensions	H 10.5" X DIA. 12"
S.S Mounting Hardware for cage, base mount and metal shrouds	Supplied with Bracket
Antenna Model Applicability	All OEM Models
Cage Antenna configuration Types	All OEM Models

JPAK-AM-600-05LS-8-12C : Revision R1 : Release Date September 28, 2020

Outline Dimensions



JPAK-AM-600-05LS-8-12C MOUNT DIMENSIONS

JPAK-AM-600-05LS-8-12C Mounting Kit Contents

ITEM #	PART#	DESCRIPTION	QTY
1	SS-12-3	S.S. THREADED ROD 1/2" X 3"	1
2	SS-CS-38-114	S.S. FHCS 3/8 X 1-1/4"	6
3	TFN-W	TEFLON WASHER	3
4	SS-TB-12-112	S.S. TAP BOLT 1/2" X 1-1/2"	3
5	SS-TB-12-2	S.S. TAP BOLT 1/2" X 2"	2
6	SS-LW-12	S.S. LOCK WASHER 1/2"	7
7	SS-FW-12	S.S. FLAT WASHER 1/2"	3
8	SN-38	SPRING NUT 3/8"	3
9	SS-CS-14-34	S.S. FHCS 1/4" X 3/4"	7

Please contact MWS engineering (eng@mwscorp.net: 877-697-2677) for questions regarding this product or other models you may be interested in.

Made in the U.S.A. 